



PROPRIETARY NOTE

THIS SPECIFICATION IS THE PROPERTY OF BOE OT AND SHALL NOT BE REPRODUCED OR COPIED WITHOUT THE WRITTEN PERMISSION OF BOE OT AND MUST BE RETURNED TO BOE OT UPON ITS REQUEST

TITLE : HT101WSB-101
Product Specification
Rev. 0

中小液晶专营 深显国际有限公司
www.sdf-china.com
客服QQ:851617122

BEIJING BOE OPTOELECTRONICS TECHNOLOGY

SPEC. NUMBER	PRODUCT GROUP	REV.	ISSUE DATE	PAGE
S864-5051 B2006-5006-O (1/3)	TFT-LCD	0	2009.08.05	1 OF 34 A4(210 X 297)



京东方
BOE

PRODUCT GROUP

REV

ISSUE DATE

TFT LCD PRODUCT

0

2009.08.05

Contents

No.	Items	Page
1.0	General Description	4
2.0	Absolute Maximum ratings	6
3.0	Electrical specifications.	7
4.0	Optical specifications.	9
5.0	Interface Connection	13
6.0	Signal Timing Specification	17
7.0	Signal Timing waveforms	19
8.0	Input Signals, Display Colors & Gray Scale of Colors	21
9.0	Power Sequence	22
10.0	Connector description	23
11.0	Mechanical Characteristics	24
12.0	Reliability Test	25
13.0	Handling & Cautions.	25
14.0	Label	26
15.0	Packing information	28
16.0	Mechanical Outline Dimension	29
17.0	EDID Table	31

SPEC. NUMBER

SPEC TITLE

HT101WSB-101 Product Specification

PAGE

3 OF 34

B2006-9006-0 (3/3)

A4(210 X 297)



京东方
BOE

PRODUCT GROUP

TFT LCD PRODUCT

REV

0

ISSUE DATE

2009.08.05

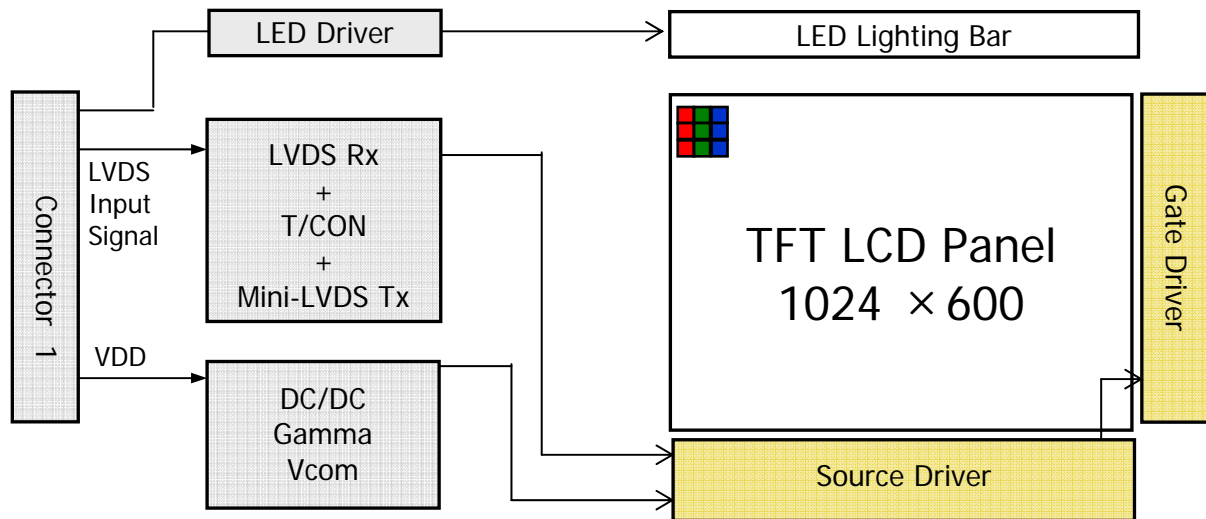
1.0 GENERAL DESCRIPTION

1.1 Introduction

HT101WSB-101 is a color active matrix TFT LCD module using amorphous silicon TFT's (Thin Film Transistors) as an active switching devices. This module has a 10.1 inch diagonally measured active area with WSVGA resolutions (1024 horizontal by 600 vertical pixel array). Each pixel is divided into RED, GREEN, BLUE dots which are arranged in vertical Stripe and this module can display 262,144 colors. The TFT-LCD panel used for this module is a low reflection type. Therefore, this module is suitable for Notebook and Mini-Notebook PC.

The LED Driver for back-light driving is built in this model.

All input signals are LVDS interface compatible.



1.2 Features

- 1 Channel LVDS Interface with 1 pixel / clock
- Thin and light weight
- 6-bit color depth, display 262K colors
- Single LED Lighting Bar. (Top side/Horizontal Direction)
- Data enable signal mode
- Side Mounting Frame
- Green Product (RoHS & Halogen free product)
- On board LED Driving circuit
- Low driving voltage and low power consumption
- On board EDID chip

SPEC. NUMBER

SPEC TITLE

HT101WSB-101 Product Specification

PAGE

4 OF 34

B2006-9006-0 (3/3)

A4(210 X 297)



京东方
BOE

PRODUCT GROUP

REV

ISSUE DATE

TFT LCD PRODUCT

0

2009.08.05

1.3 Application

- Notebook PC (Wide type)

1.4 General Specification

The followings are general specifications at the model HT101WSB-101. (listed in Table 1.)

<Table 1. General Specifications>

Parameter	Specification	Unit	Remarks
Active area	222.72(H) × 125.28(V)	mm	
Number of pixels	1024 (H) × 600 (V)	pixels	
Pixel pitch	0.2175 (H) × 0.2088 (V)	mm	
Pixel arrangement	RGB Vertical stripe		
Display colors	262K	colors	
Display mode	Normally White		
Dimensional outline	235.5(H)(max.) × 143.5 (V)(max.) × 5.2(D)(max)	mm	
Weight	195 (max)	g	
Surface treatment	Glare,3H		
Back-light	Upper edge side, 1-LED Lighting Bar type		Note 1
Power consumption	P_D : 0.85(max)	W	
	P_{BL} : 2.00(max)	W	
	P_{Total} : 2.85(max)	W	

Notes :

1. LED Lighting Bar (27*LED Array)

SPEC. NUMBER

SPEC TITLE

HT101WSB-101 Product Specification

PAGE

5

OF 34

B2006-9006-0 (3/3)

A4(210 X 297)



京东方
BOE

PRODUCT GROUP

TFT LCD PRODUCT

REV

0

ISSUE DATE

2009.08.05

2.0 ABSOLUTE MAXIMUM RATINGS

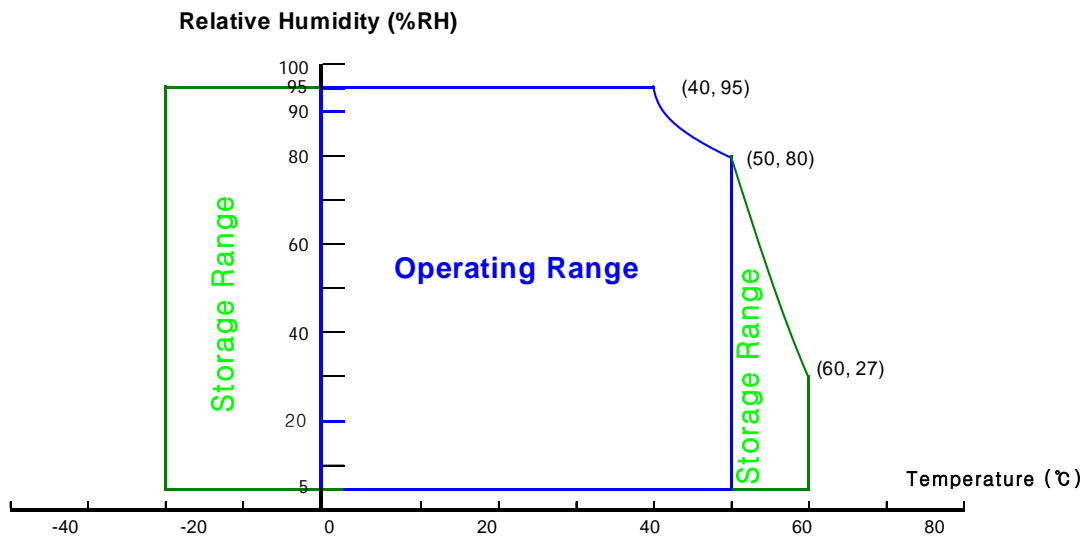
The followings are maximum values which, if exceeded, may cause faulty operation or damage to the unit. The operational and non-operational maximum voltage and current values are listed in Table 2.

< Table 2. Absolute Maximum Ratings >

Ta=25+/-2°C

Parameter	Symbol	Min.	Max.	Unit	Remarks
Power Supply Voltage	V _{DD}	-0.3	4.0	V	Note 1
Logic Supply Voltage	V _{IN}	V _{SS} -0.3	V _{DD} +0.3	V	
Operating Temperature	T _{OP}	0	+50	°C	Note 2
Storage Temperature	T _{ST}	-20	+60	°C	

- Notes : 1. Permanent damage to the device may occur if maximum values are exceeded functional operation should be restricted to the condition described under normal operating conditions.
2. Temperature and relative humidity range are shown in the figure below.
 95 % RH Max. (40 °C ≥ Ta)
 Maximum wet - bulb temperature at 39 °C or less. (Ta > 40 °C) No condensation.



SPEC. NUMBER

SPEC TITLE

HT101WSB-101 Product Specification

PAGE

6 OF 34

S864-5051
B2006-9006-0 (3/3)

A4(210 X 297)



京东方
BOE

PRODUCT GROUP

REV

ISSUE DATE

TFT LCD PRODUCT

0

2009.08.05

3.0 ELECTRICAL SPECIFICATIONS

3.1 Electrical Specifications

< Table 3. Electrical specifications >

Ta=25+/-2°C

Parameter		Min.	Typ.	Max.	Unit	Remarks
Power Supply Voltage	V _{DD}	3.0	3.3	3.6	V	Note 1
Permissible Input Ripple Voltage	V _{RF}	-	-	100	mV	At V _{DD} = 3.3V
In-Rush Current	I _{RUSH}			1000	mA	Note 2
Power Supply Current	I _{DD}	-	200	260	mA	Note 1
Positive-going Input Threshold Voltage	V _{IT+}	-	-	100	mV	V _{cm} = 1.2V typ.
Negative-going Input Threshold Voltage	V _{IT-}	-100	-	-	mV	
Differential Input Voltage	V _{ID}	100	-	600	mV	Note 2
Power Consumption	P _D	-	0.66	0.85	W	Note 1
	P _{BL}	-	1.90	2.00	W	Note 3
	P _{total}	-	2.56	2.85	W	

Notes : 1. The supply voltage is measured and specified at the interface connector of LCM.
The current draw and power consumption specified is for 3.3V at 25°C.

a) Typ : Window XP pattern

b) Max : Vertical 2 line skip pattern

2. Duration of rush current is about 2ms and rising time of VDD is 520us ± 20%.

3. Calculated value for reference (VF × IF)

SPEC. NUMBER

SPEC TITLE

HT101WSB-101 Product Specification

PAGE

OF 34

S864-5051
B2006-9006-0 (3/3)

A4(210 X 297)



京东方
BOE

PRODUCT GROUP

REV

ISSUE DATE

TFT LCD PRODUCT

0

2009.08.05

3.0 ELECTRICAL SPECIFICATIONS

3.2 Backlight Unit

< Table 4. LED Driving guideline specifications >

Ta=25+/-2°C

Parameter		Min.	Typ.	Max.	Unit	Remarks
LED Forward Voltage	V _F	3.0	3.2	3.4	V	-
LED Forward Current	I _F	-	20		mA	-
LED Power Consumption	P _{LED}		1.90	2.00	W	Note 1
LED Life-Time	N/A	15,000	-	-	Hour	I _F = 20mA
Power supply voltage for LED Driver	V _{LED}	7	12	20	V	
EN Control Level	Backlight on	2.0		5.0	V	
	Backlight off	0		1.0	V	
PWM Control Level	PWM High Level	2.0		5.0	V	
	PWM Low Level	0		0.1	V	
PWM Control Frequency	F _{PWM}	180	200	220	Hz	
Duty Ratio	-	20	-	100	%	

Notes : 1. Calculator Value for reference $I_F \times V_F \times N_{LED} = P_{LED}$

2. The LED Life-time define as the estimated time to 50% degradation of initial luminous.

SPEC. NUMBER

SPEC TITLE

HT101WSB-101 Product Specification

PAGE

8

OF 34

B2006-9006-0 (3/3)

A4(210 X 297)



京东方
BOE

PRODUCT GROUP

REV

ISSUE DATE

TFT LCD PRODUCT

0

2009.08.05

4.0 OPTICAL SPECIFICATION

4.1 Overview

The test of Optical specifications shall be measured in a dark room (ambient luminance ≤ 1 lux and temperature = $25 \pm 2^\circ\text{C}$) with the equipment of Luminance meter system (Goniometer system and TOPCON BM-5) and test unit shall be located at an approximate distance 50cm from the LCD surface at a viewing angle of θ and ϕ equal to 0° . We refer to $\theta \phi = 0$ ($= \theta 3$) as the 3 o'clock direction (the "right"), $\theta \phi = 90$ ($= \theta 12$) as the 12 o'clock direction ("upward"), $\theta \phi = 180$ ($= \theta 9$) as the 9 o'clock direction ("left") and $\theta \phi = 270$ ($= \theta 6$) as the 6 o'clock direction ("bottom"). While scanning θ and/or ϕ , the center of the measuring spot on the Display surface shall stay fixed. The backlight should be operating for 30 minutes prior to measurement. VDD shall be $3.3 \pm 0.3\text{V}$ at 25°C . Optimum viewing angle direction is 6 o'clock.

4.2 Optical Specifications

<Table 5. Optical Specifications>

Parameter		Symbol	Condition	Min.	Typ.	Max.	Unit	Remark
Viewing Angle range	Horizontal	θ_3	CR > 10	40	45	-	Deg.	Note 1
		θ_9		40	45	-	Deg.	
	Vertical	θ_{12}		15	15	-	Deg.	
		θ_6		30	35	-	Deg.	
Luminance Contrast ratio		CR	$\theta = 0^\circ$	500	600			Note 2
Luminance of White	5 Points	Y_w	$\theta = 0^\circ$ ILED = 20mA	180	200	-	cd/m ²	Note 3
White Luminance uniformity	5 Points	ΔY_5		80	-	-		Note 4
	13 Points	ΔY_{11}		65	-	-		
White Chromaticity		x_w	$\theta = 0^\circ$	0.283	0.313	0.343	CIE1931	Note 5
		y_w		0.299	0.329	0.359		
Reproduction of color	Red	x_R	$\theta = 0^\circ$	0.550	0.580	0.610		
		y_R		0.310	0.340	0.370		
	Green	x_G		0.280	0.310	0.340		
		y_G		0.520	0.550	0.580		
	Blue	x_B		0.125	0.155	0.185		
		y_B		0.125	0.155	0.185		
Color Gamut				42%	45%	-	NTSC	
Response Time (Rising + Falling)		T_{RT}	Ta = 25°C $\theta = 0^\circ$	-	8	16	ms	Note 6
Cross Talk		CT	$\theta = 0^\circ$	-	-	2.0	%	Note 7

SPEC. NUMBER

SPEC TITLE

HT101WSB-101 Product Specification

PAGE

OF 34

S864-5051
B2006-9006-0 (3/3)

A4(210 X 297)

 京东方 BOE	PRODUCT GROUP	REV	ISSUE DATE
	TFT LCD PRODUCT	0	2009.08.05

Notes : 1. Viewing angle is the angle at which the contrast ratio is greater than 10. The viewing angles are determined for the horizontal or 3, 9 o'clock direction and the vertical or 6, 12 o'clock direction with respect to the optical axis which is normal to the LCD surface (see FIGURE 1).

2. Contrast measurements shall be made at viewing angle of $\Theta = 0$ and at the center of the LCD surface. Luminance shall be measured with all pixels in the view field set first to white, then to the dark (black) state .
(see FIGURE 1) Luminance Contrast Ratio (CR) is defined mathematically.

$$CR = \frac{\text{Luminance when displaying a white raster}}{\text{Luminance when displaying a black raster}}$$

3. Luminance of white is defined as luminance values of 5 points' average across the LCD surface. Luminance shall be measured with all pixels in the view field set first to white. This measurement shall be taken at the locations shown in FIGURE 2 for a total of the measurements per display.

4. The White luminance uniformity on LCD surface is then expressed as : $\Delta Y = \text{Minimum Luminance of 5(or 11) points} / \text{Maximum Luminance of 5(or 11) points}$ (see FIGURE 2).

5. The color chromaticity coordinates specified in Table 5 shall be calculated from the spectral data measured with all pixels first in red, green, blue and white. Measurements shall be made at the center of the panel. The color gamut shall be calculated from the color chromaticity coordinates.

6. The electro-optical response time measurements shall be made as FIGURE 3 by switching the "data" input signal ON and OFF. The times needed for the luminance to change from 10% to 90% is T_r , and 90% to 10% is T_d .

7. Cross-Talk of one area of the LCD surface by another shall be measured by comparing the luminance (YA) of a 25mm diameter area, with all display pixels set to a gray level, to the luminance (YB) of that same area when any adjacent area is driven dark. (See FIGURE 4).

SPEC. NUMBER	SPEC TITLE	PAGE
S864-5051 B2006-9006-0 (3/3)	HT101WSB-101 Product Specification	10 OF 34
		A4(210 X 297)



PRODUCT GROUP

REV

ISSUE DATE

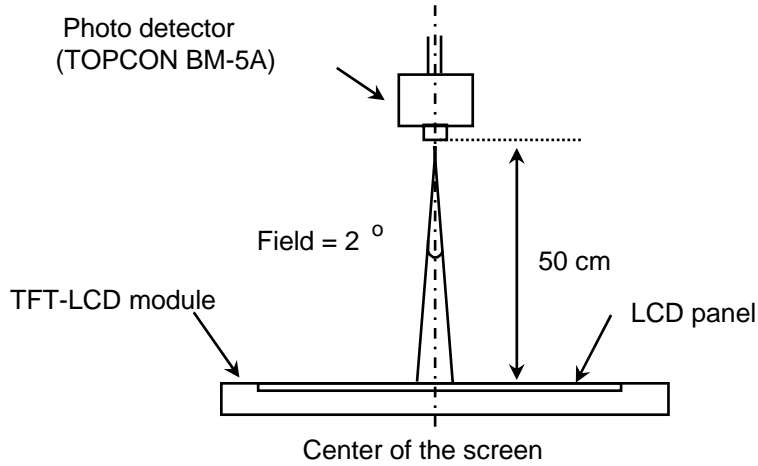
TFT LCD PRODUCT

0

2009.08.05

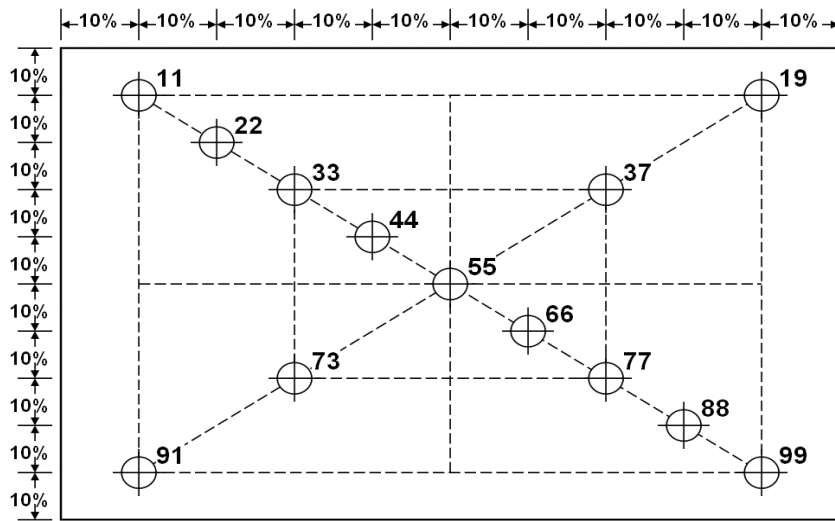
4.3 Optical measurements

Figure 1. Measurement Set Up



Optical characteristics measurement setup

Figure 2. White Luminance and Uniformity Measurement Locations



Note

- Center point is defined as point 55
- 5 points are defined as point 33, 37,55,73,77
- 11 points are defined as point 11,22,33,44,55,66,77,88,99,19,91

SPEC. NUMBER

SPEC TITLE

HT101WSB-101 Product Specification

PAGE
11 OF 34

B2006-9006-0 (3/3)

A4(210 X 297)



京东方
BOE

PRODUCT GROUP

TFT LCD PRODUCT

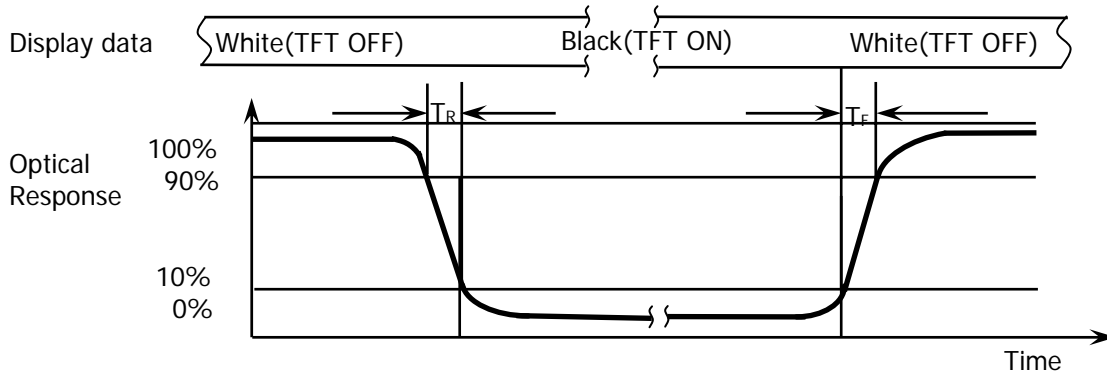
REV

0

ISSUE DATE

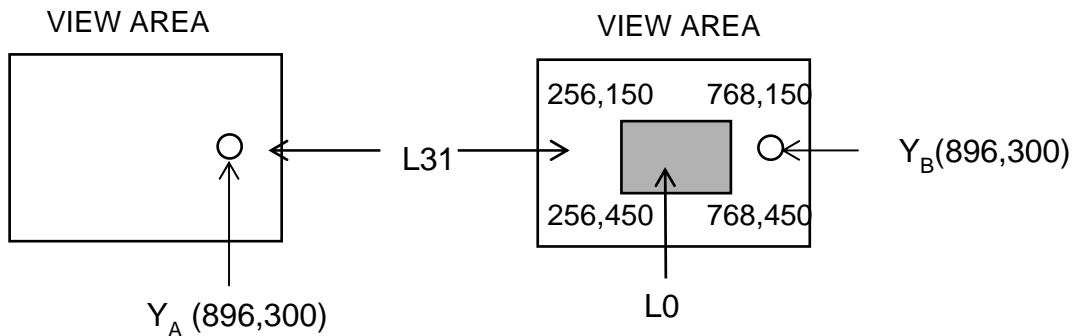
2009.08.05

Figure 3. Response Time Testing



The electro-optical response time measurements shall be made as shown in FIGURE 3 by switching the “data” input signal ON and OFF. The times needed for the luminance to change from 10% to 90% is Td and 90% to 10% is Tr.

Figure 4. Cross Modulation Test Description



$$\text{Cross-Talk (\%)} = \left| \frac{Y_B - Y_A}{Y_B} \right| \times 100$$

Where:

Y_A = Initial luminance of measured area (cd/m²)

Y_B = Subsequent luminance of measured area (cd/m²)

The location measured will be exactly the same in both patterns

Cross-Talk of one area of the LCD surface by another shall be measured by comparing the luminance (YA) of a 25mm diameter area, with all display pixels set to a gray level, to the luminance (YB) of that same area when any adjacent area is driven dark (Refer to FIGURE 4).

SPEC. NUMBER

SPEC TITLE

HT101WSB-101 Product Specification

PAGE
12 OF 34

B2006-9006-0 (3/3)

A4(210 X 297)



京东方
BOE

PRODUCT GROUP

REV

ISSUE DATE

TFT LCD PRODUCT

0

2009.08.05

5.0 INTERFACE CONNECTION.

5.1 Electrical Interface Connection

The electronics interface connector is I-PEX 20455-040E-12 or Compatible or equivalent. The mating connector part number is I-PEX 20455-040T-11 or Compatible. The connector interface pin assignments are listed in Table 6.

<Table 6. Pin Assignments for the Interface Connector>

Terminal	Symbol	Functions
Pin No.	Symbol	Description
1	NC	Connection to Pin 34
2	VDDIN	Power Supply, 3.3V (typ.)
3	VDDIN	Power Supply, 3.3V (typ.)
4	VDC	VDC 3.3V power for EDID
5	BISTC	For BIST Control (Note. 1)
6	CLK EDID	EDID Clock
7	Data EDID	EDID Data
8	RxIN0-	Transmission Data of 0 Negative -
9	RxIN0+	Transmission Data of 0 Positive +
10	GND	Ground
11	RxIN1-	Transmission Data of 1 Negative -
12	RxIN1+	Transmission Data of 1 Positive +
13	GND	Ground
14	RxIN2-	Transmission Data of 2 Negative -
15	RxIN2+	Transmission Data of 2 Positive +
16	GND	Ground
17	RxCLKIN-	Sampling Clock of Negative -
18	RxCLKIN+	Sampling Clock of Positive +
19	GND	Ground
20	NC	No Connection
21	NC	No Connection
22	GND	Ground
23	NC	No Connection
24	NC	No Connection
25	GND	Ground
26	NC	No Connection
27	NC	
28	GND	Ground
29	NC	No Connection
30	NC	No Connection

SPEC. NUMBER

SPEC TITLE

HT101WSB-101 Product Specification

PAGE

13 OF 34

S864-5051
B2006-9006-0 (3/3)

A4(210 X 297)



京东方
BOE

PRODUCT GROUP

REV

ISSUE DATE

TFT LCD PRODUCT

0

2009.08.05

Terminal	Symbol	Functions
Pin No.	Symbol	Description
31	VLED_GND	LED Ground
32	VLED_GND	LED Ground
33	VLED_GND	LED Ground
34	NC	Connection to Pin 1
35	PWM	System PWM Signal Input
36	LED_EN	LED enable pin(+3V Input)
37	NC	No Connection (Reserve)
38	VLED	LED Power Supply 7V-21V
39	VLED	LED Power Supply 7V-21V
40	VLED	LED Power Supply 7V-21V

Note. 1

- BIST = "H (3.3V)" : Display BIST pattern @ No LVDS CLK or DE
(White->Black->Red->Green->Blue->White....)
- BIST = "L (GND or NC)" : Display Black Patten @ No LVDS CLK or DE

SPEC. NUMBER

SPEC TITLE

HT101WSB-101 Product Specification

14 PAGE
OF 34

B2006-9006-0 (3/3)
S864-5051

A4(210 X 297)



PRODUCT GROUP

REV

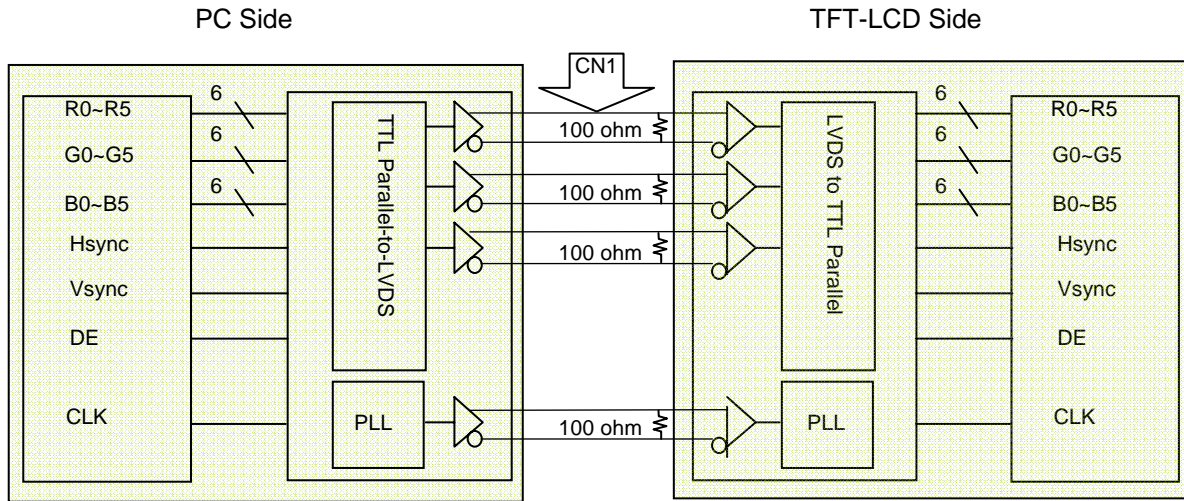
ISSUE DATE

TFT LCD PRODUCT

0

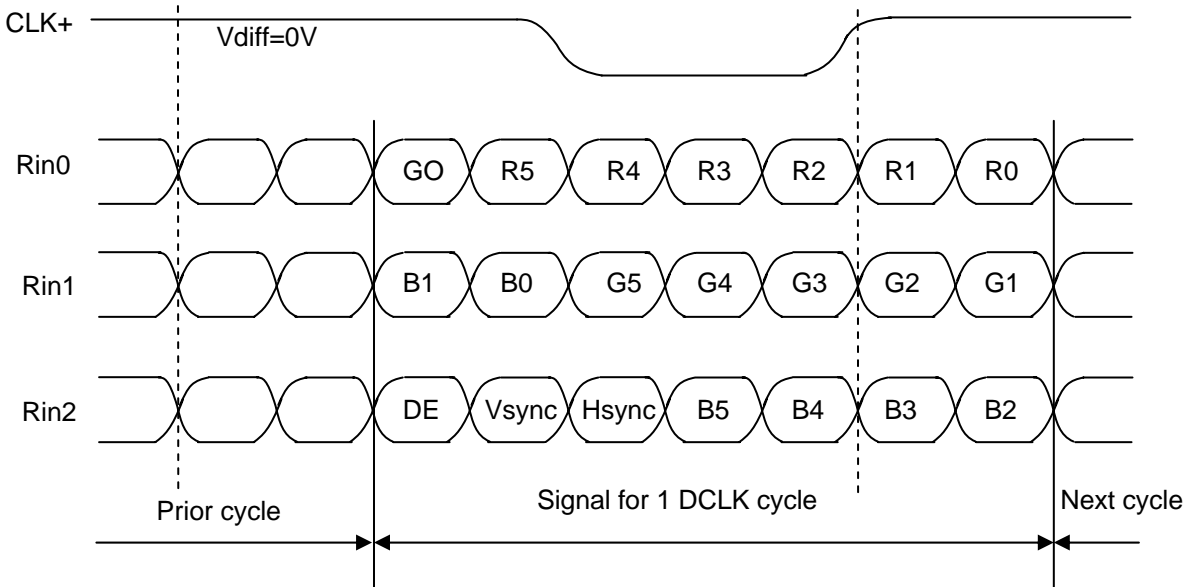
2009.08.05

5-2. LVDS Interface



Note. Transmitter : Thine THC63LVDM63A or equivalent.
Transmitter is not contained in Module.

5.3.LVDS Input signal



Note. Pin connection in case of using Thine THC63LVDM63A

SPEC. NUMBER

SPEC TITLE

HT101WSB-101 Product Specification

PAGE
15 OF 34

S864-5051
B2006-9006-0 (3/3)

A4(210 X 297)



PRODUCT GROUP

REV

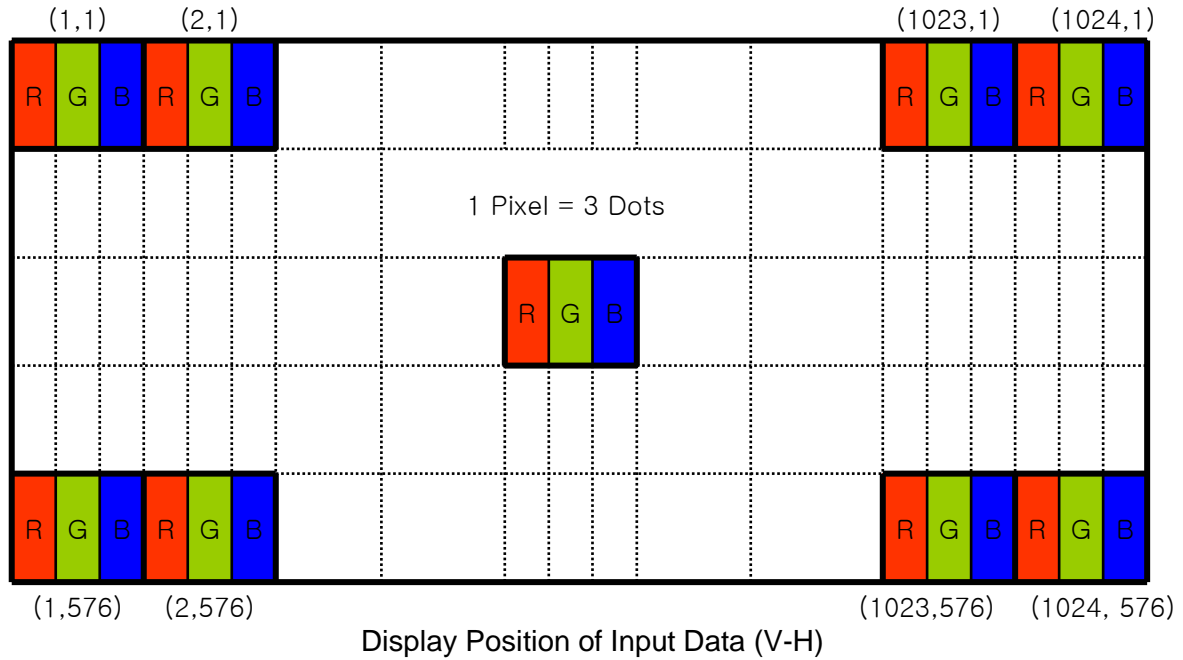
ISSUE DATE

TFT LCD PRODUCT

0

2009.08.05

5.3 Data Input Format



5.4 Back-light & LCM Interface Connection

Interface Connector: MS24022P10 or Equivalent

<Table 7. Pin Assignments for the BLU & LCM Connector>

Pin No.	Symbol	Description	Pin No.	Symbol	Description
1	Vout	LED anode connection	6	LED2	LED cathode connection
2	Vout	LED anode connection	7	LED3	LED cathode connection
3	Vout	LED anode connection	8	LED4	No Connection
4	NC	No Connection	9	LED5	No Connection
5	LED1	LED cathode connection	10	LED6	No Connection

SPEC. NUMBER

SPEC TITLE

HT101WSB-101 Product Specification

PAGE
16 OF 34

S864-5051
B2006-9006-0 (3/3)

A4(210 X 297)



京东方
BOE

PRODUCT GROUP

REV

ISSUE DATE

TFT LCD PRODUCT

0

2009.08.05

6.0 SIGNAL TIMING SPECIFICATION

6.1 The HT101WSB-101 is operated by the DE only.

Item		Symbols	Min	Typ	Max	Unit
Clock	Frequency	1/Tc	30	57.70	72	MHz
	High Time	Tch	-	4/7	-	Tc
	Low Time	Tcl	-	3/7	-	Tc
Frame Period		Tv	-	642	-	lines
			40	60	-	Hz
			-	17	25ms	ms
Vertical Display Period		Tvd	-	600	-	lines
One line Scanning Period		Th	-	1498	-	clocks
Horizontal Display Period		Thd	1024	1024	1024	clocks

SPEC. NUMBER

SPEC TITLE

HT101WSB-101 Product Specification

PAGE

17 OF 34

S864-5051
B2006-9006-0 (3/3)

A4(210 X 297)



PRODUCT GROUP

REV

ISSUE DATE

TFT LCD PRODUCT

0

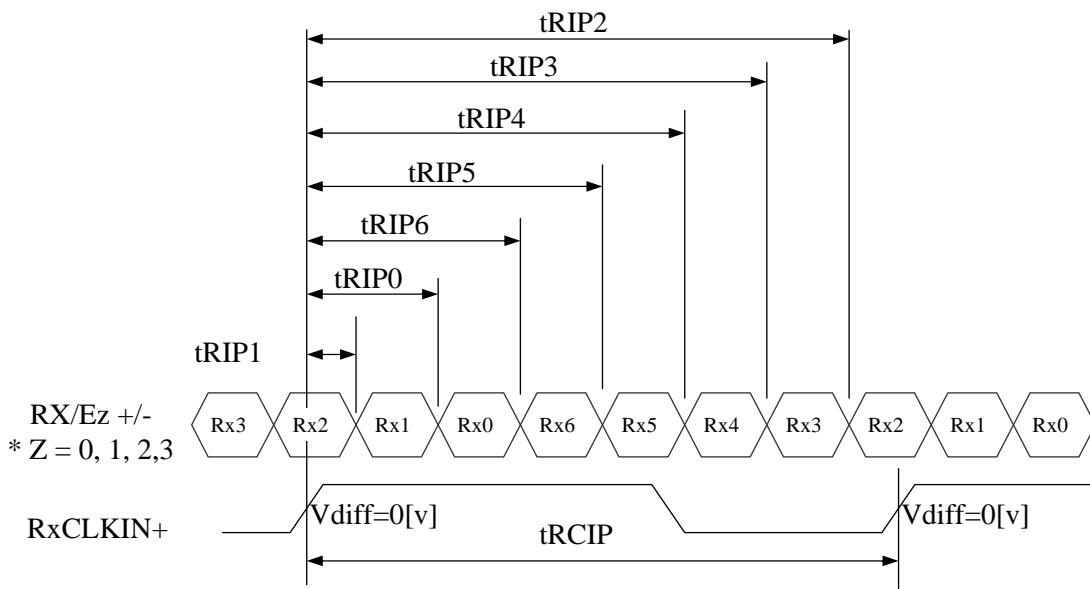
2009.08.05

6.2 LVDS Rx Interface Timing Parameter

The specification of the LVDS Rx interface timing parameter is shown in Table 8.

<Table 8. LVDS Rx Interface Timing Specification>

Item	Symbol	Min	Typ	Max	Unit	Remark
CLKIN Period	tRCIP	13.89	17.33	33.3	nsec	
CLK Difference	tCdiff	-tRCIP*(3/7)	0	+tRCIP*(3/7)	nsec	
Input Data 0	tRIP1	-0.4	0.0	+0.4	nsec	
Input Data 1	tRIP0	tRICP/7-0.4	tRICP/7	tRICP/7+0.4	nsec	
Input Data 2	tRIP6	2 × tRICP/7-0.4	2 × tRICP/7	2 × tRICP/7+0.4	nsec	
Input Data 3	tRIP5	3 × tRICP/7-0.4	3 × tRICP/7	3 × tRICP/7+0.4	nsec	
Input Data 4	tRIP4	4 × tRICP/7-0.4	4 × tRICP/7	4 × tRICP/7+0.4	nsec	
Input Data 5	tRIP3	5 × tRICP/7-0.4	5 × tRICP/7	5 × tRICP/7+0.4	nsec	
Input Data 6	tRIP2	6 × tRICP/7-0.4	6 × tRICP/7	6 × tRICP/7+0.4	nsec	



SPEC. NUMBER

SPEC TITLE

HT101WSB-101 Product Specification

PAGE
18 OF 34

S864-5051
B2006-9006-0 (3/3)

A4(210 X 297)



PRODUCT GROUP

REV

ISSUE DATE

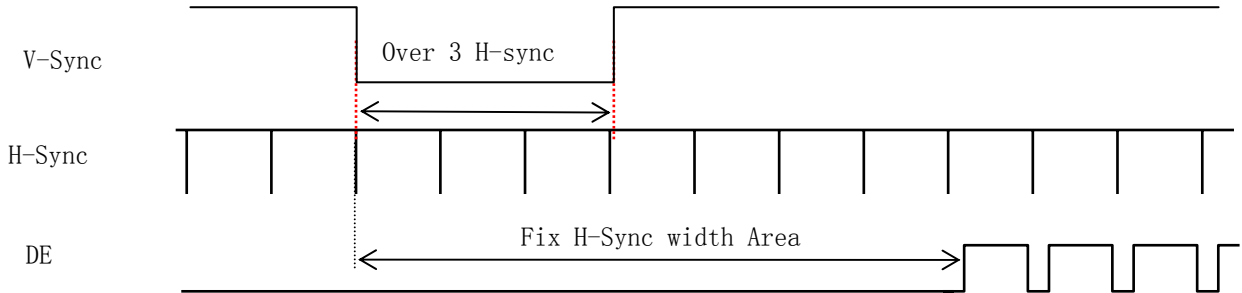
TFT LCD PRODUCT

0

2009.08.05

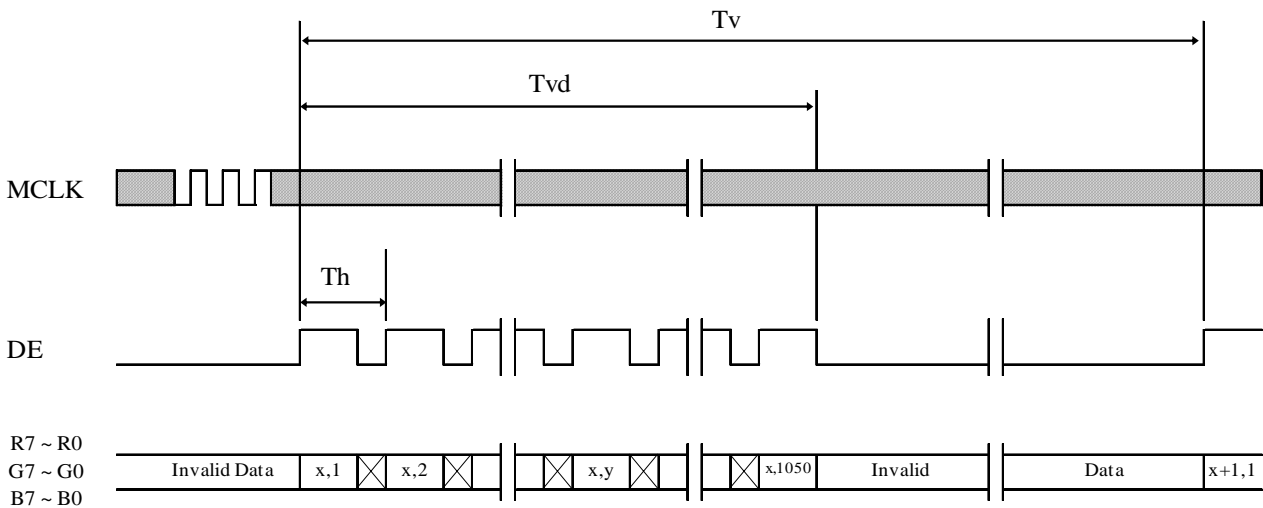
7.0 SIGNAL TIMING WAVEFORMS OF INTERFACE SIGNAL

7.1 Sync Timing Waveforms



- 1) Need over 3 H-sync during V-Sync Low
- 2) Fix H-Sync width from V-Sync falling edge to first rising edge

7.2 Vertical Timing Waveforms



SPEC. NUMBER

SPEC TITLE

S864-5051 (3/3)

HT101WSB-101 Product Specification

PAGE
OF 34

B2006-9006-0

A4(210 X 297)



京东方
BOE

PRODUCT GROUP

TFT LCD PRODUCT

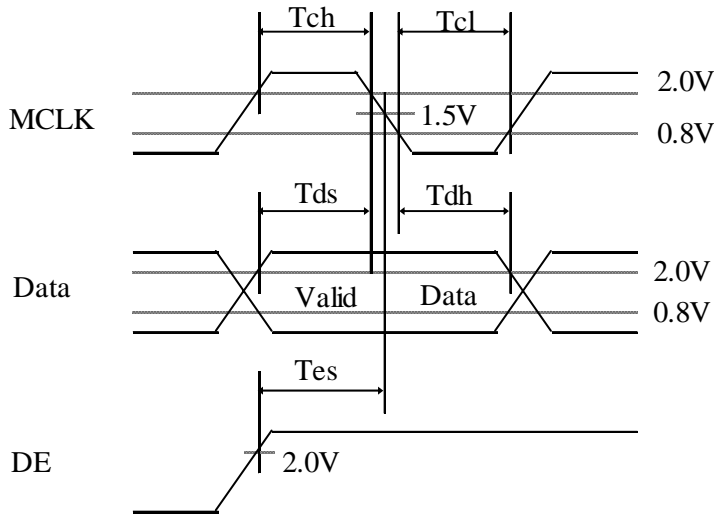
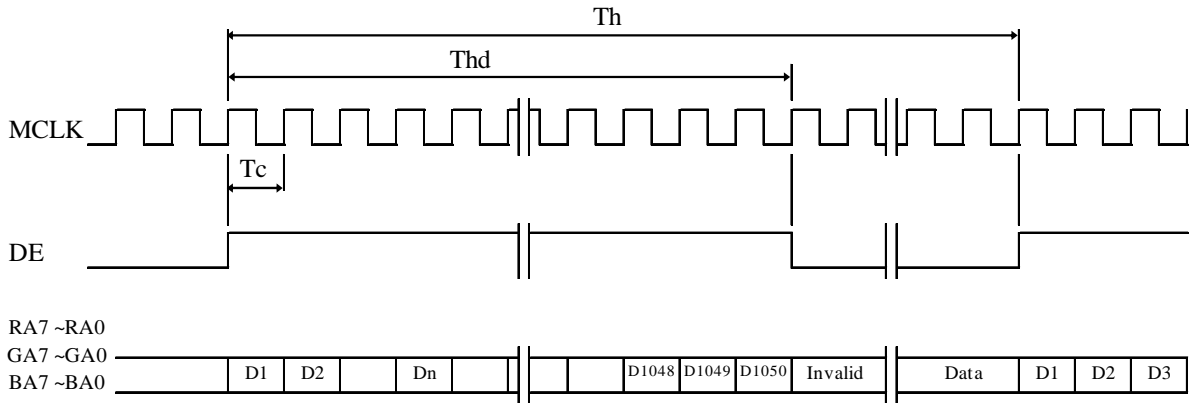
REV

0

ISSUE DATE

2009.08.05

7.3 Horizontal Timing Waveforms



SPEC. NUMBER

SPEC TITLE

HT101WSB-101 Product Specification

PAGE
20 OF 34

B2006-9006-0 (3/3)

A4(210 X 297)



京东方
BOE

PRODUCT GROUP

TFT LCD PRODUCT

REV

0

ISSUE DATE

2009.08.05

8.0 INPUT SIGNALS, BASIC DISPLAY COLORS & GRAY SCALE OF COLORS

	Colors & Gray scale	Data signal																	
		R0	R1	R2	R3	R4	R5	G0	G1	G2	G3	G4	G5	B0	B1	B2	B3	B4	B5
Basic colors	Black	0	0	0	0	0	0	0	0	0	0	0	0	0	0	0	0	0	0
	Blue	0	0	0	0	0	0	0	0	0	0	0	0	1	1	1	1	1	1
	Green	0	0	0	0	0	0	1	1	1	1	1	1	0	0	0	0	0	0
	Light Blue	0	0	0	0	0	0	1	1	1	1	1	1	1	1	1	1	1	1
	Red	1	1	1	1	1	1	0	0	0	0	0	0	0	0	0	0	0	0
	Purple	1	1	1	1	1	1	0	0	0	0	0	0	1	1	1	1	1	1
	Yellow	1	1	1	1	1	1	1	1	1	1	1	1	0	0	0	0	0	0
	White	1	1	1	1	1	1	1	1	1	1	1	1	1	1	1	1	1	1
Gray scale of Red	Black	0	0	0	0	0	0	0	0	0	0	0	0	0	0	0	0	0	0
	△	1	0	0	0	0	0	0	0	0	0	0	0	0	0	0	0	0	0
	Darker	0	1	0	0	0	0	0	0	0	0	0	0	0	0	0	0	0	0
	△				↑						↑						↑		
	▽				↓						↓						↓		
	Brighter	1	0	1	1	1	1	0	0	0	0	0	0	0	0	0	0	0	0
Gray scale of Green	Black	0	0	0	0	0	0	0	0	0	0	0	0	0	0	0	0	0	0
	△	0	0	0	0	0	0	1	0	0	0	0	0	0	0	0	0	0	0
	Darker	0	0	0	0	0	0	0	1	0	0	0	0	0	0	0	0	0	0
	△				↑						↑						↑		
	▽				↓						↓						↓		
	Brighter	0	0	0	0	0	0	1	0	1	1	1	1	0	0	0	0	0	0
Gray scale of Blue	Black	0	0	0	0	0	0	0	0	0	0	0	0	0	0	0	0	0	0
	△	0	0	0	0	0	0	0	0	0	0	0	0	1	0	0	0	0	0
	Darker	0	0	0	0	0	0	0	0	0	0	0	0	0	1	0	0	0	0
	△				↑						↑						↑		
	▽				↓						↓						↓		
	Brighter	0	0	0	0	0	0	0	0	0	0	0	0	1	0	1	1	1	1
Gray scale of White & Black	Black	0	0	0	0	0	0	0	0	0	0	0	0	0	0	0	0	0	0
	△	1	0	0	0	0	0	1	0	0	0	0	0	1	0	0	0	0	0
	Darker	0	1	0	0	0	0	0	1	0	0	0	0	0	1	0	0	0	0
	△				↑						↑						↑		
	▽				↓						↓						↓		
	Brighter	1	0	1	1	1	1	1	0	1	1	1	1	1	0	1	1	1	1
White	1	1	1	1	1	1	1	1	1	1	1	1	1	1	1	1	1	1	

SPEC. NUMBER

SPEC TITLE

HT101WSB-101 Product Specification

PAGE
21 OF 34

S864-5051
B2006-9006-0 (3/3)

A4(210 X 297)



京东方
BOE

PRODUCT GROUP

TFT LCD PRODUCT

REV

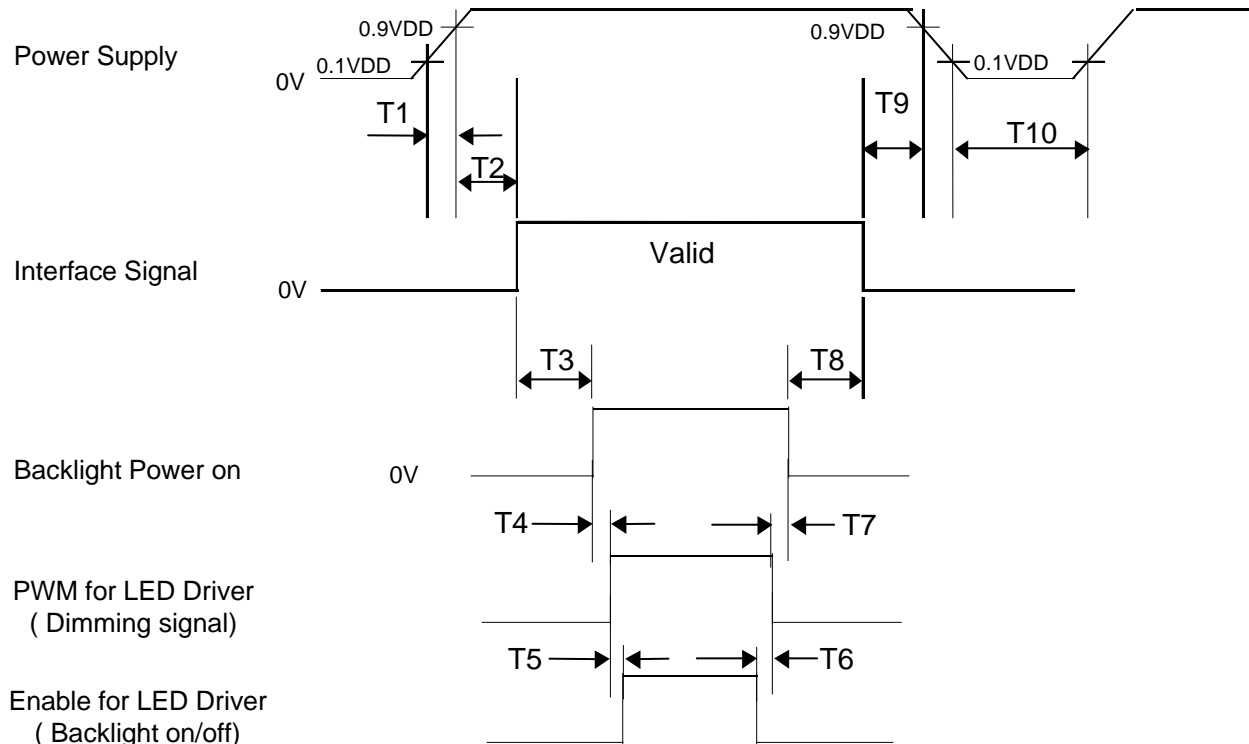
0

ISSUE DATE

2009.08.05

9.0 POWER SEQUENCE

To prevent a latch-up or DC operation of the LCD module, the power on/off sequence shall be as shown in below



- $T1 \leq 10 \text{ ms}$
- $0 \text{ ms} \leq T2 \leq 50 \text{ ms}$
- $200 \text{ ms} \leq T3$
- $10 \text{ ms} \leq T4$
- $10 \text{ ms} \leq T5$
- $0 \text{ ms} \leq T6$
- $10 \text{ ms} \leq T7$
- $200 \text{ ms} \leq T8$
- $0 \text{ ms} \leq T9 \leq 50 \text{ ms}$
- $1 \text{ s} \leq T10$

Notes:

1. When the power supply VDD is 0V, keep the level of input signals on the low or keep high impedance.
2. Do not keep the interface signal high impedance when power is on. Back Light must be turn on after power for logic and interface signal are valid.

SPEC. NUMBER

SPEC TITLE

HT101WSB-101 Product Specification

PAGE
22 OF 34

S864-5051
B2006-9006-0 (3/3)

A4(210 X 297)



京东方
BOE

PRODUCT GROUP

REV

ISSUE DATE

TFT LCD PRODUCT

0

2009.08.05

10.0 Connector Description

Physical interface is described as for the connector on LCM.

These connectors are capable of accommodating the following signals and will be following components.

10.1 TFT LCD Module

Connector Name /Description	For Signal Connector
Manufacturer	IPEX or Compatible
Type/ Part Number	I-PEX 20455-040E-12, IS050-L40B-C10 or Compatible
Mating housing/ Part Number	I-PEX 20455-040T-11 or Compatible

SPEC. NUMBER

SPEC TITLE

HT101WSB-101 Product Specification

PAGE

23 OF 34

B2006-9006-0 (3/3)

A4(210 X 297)



京东方
BOE

PRODUCT GROUP

REV

ISSUE DATE

TFT LCD PRODUCT

0

2009.08.05

11.0 MECHANICAL CHARACTERISTICS

11.1 Dimensional Requirements

FIGURE 5 shows mechanical outlines for the model HT101WSB-101.
Other parameters are shown in Table 9.

<Table 9. Dimensional Parameters>

Parameter	Specification	Unit
Active Area	222.72 (H) × 125.28 (V)	mm
Number of pixels	1024 (H) X 600 (V) (1 pixel = R + G + B dots)	
Pixel pitch	0.2175 (H) X 0.2088 (V)	
Pixel arrangement	RGB Vertical stripe	
Display colors	262,144	
Display mode	Normally white	
Dimensional outline	235.5 × 143.5 × 5.2(max)	mm
Weight	195 (max)	gram
Back Light	Connector : MS24022P10	
	LED, Horizontal-LED Array type	

11.2 Mounting

See FIGURE 5.

11.3 Glare and Polarizer Hardness.

The surface of the LCD has a glare coating to maximize readability and hard coating to reduce scratching.

11.4 Light Leakage

There shall not be visible light from the back-lighting system around the edges of the screen as seen from a distance 50cm from the screen with an overhead light level of 350lux.

SPEC. NUMBER

SPEC TITLE

HT101WSB-101 Product Specification

PAGE

24 OF 34

S864-5051
B2006-9006-0 (3/3)

A4(210 X 297)



京东方
BOE

PRODUCT GROUP

REV

ISSUE DATE

TFT LCD PRODUCT

0

2009.08.05

12.0 RELIABILITY TEST

The Reliability test items and its conditions are shown in below.

<Table 10. Reliability test>

No	Test Items	Conditions
1	High temperature storage test	Ta = 60 °C, 240 hrs
2	Low temperature storage test	Ta = -20 °C, 240 hrs
3	High temperature & high humidity operation test	Ta = 50 °C, 80%RH, 240 hrs
4	High temperature operation test	Ta = 50 °C, 240 hrs
5	Low temperature operation test	Ta = 0 °C, 240 hrs
6	Thermal shock	Ta = -20 °C ↔ 60 °C (0.5 hr), 100 cycle
7	Vibration test (non-operating)	1.5G, 10~500Hz Sine X,Y,Z / Sweep rate : 30min
8	Shock test (non-operating)	220G, Half Sine Wave 2msec ±X, ±Y, ±Z Once for each direction
9	Electro-static discharge test (non-operating)	Air : 150 pF, 330 Ω, 15 KV Contact : 150 pF, 330 Ω, 8 KV

13.0 HANDLING & CAUTIONS

(1) Cautions when taking out the module

- Pick the pouch only, when taking out module from a shipping package.

(2) Cautions for handling the module

- As the electrostatic discharges may break the LCD module, handle the LCD module with care. Peel a protection sheet off from the LCD panel surface as slowly as possible.
- As the LCD panel and back - light element are made from fragile glass material, impulse and pressure to the LCD module should be avoided.
- As the surface of the polarizer is very soft and easily scratched, use a soft dry cloth without chemicals for cleaning.
- Do not pull the interface connector in or out while the LCD module is operating.
- Put the module display side down on a flat horizontal plane.
- Handle connectors and cables with care.

(3) Cautions for the operation

- When the module is operating, do not lose CLK, ENAB signals. If any one of these signals is lost, the LCD panel would be damaged.
- Obey the supply voltage sequence. If wrong sequence is applied, the module would be damaged.

SPEC. NUMBER

SPEC TITLE

HT101WSB-101 Product Specification

PAGE

25

OF 34

B2006-5006-0 (3/3)

A4(210 X 297)

 京东方 BOE	PRODUCT GROUP	REV	ISSUE DATE
	TFT LCD PRODUCT	0	2009.08.05

- (4) Cautions for the atmosphere
- Dew drop atmosphere should be avoided.
 - Do not store and/or operate the LCD module in a high temperature and/or humidity atmosphere. Storage in an electro-conductive polymer packing pouch and under relatively low temperature atmosphere is recommended.
- (5) Cautions for the module characteristics
- Do not apply fixed pattern data signal to the LCD module at product aging.
 - Applying fixed pattern for a long time may cause image sticking.
- (6) Other cautions
- Do not disassemble and/or re-assemble LCD module.
 - Do not re-adjust variable resistor or switch etc.
 - When returning the module for repair or etc., Please pack the module not to be broken. We recommend to use the original shipping packages.

14.0 LABEL

(1) Product label



1 2 3 4 5 6 7

X	X	X	X	X	1	0	0	X	X	X	X	X	X	X
---	---	---	---	---	---	---	---	---	---	---	---	---	---	---

Type designation

No 5. Month (1, 2, 3, ..., 9, X, Y, Z)

No 1. Control Number

No 6. Product Identification (FG)

No 2. Rank / Grade

No 7. Serial Number

No 3. Line classification (BOE OT:A/BC)

No 4. Year (05 : 2005, 06: 2006, ...)

SPEC. NUMBER B2006-9006-0 (3/3)	SPEC TITLE HT101WSB-101 Product Specification	PAGE 26 OF 34 A4(210 X 297)
------------------------------------	--	--------------------------------------



京东方
BOE

PRODUCT GROUP

TFT LCD PRODUCT

REV

0

ISSUE DATE

2009.08.05

Stage Revision code list

Classification	No Change	1 st Revision	2 nd Revision	...	9 th Revision	...
SST(WS)	X00	X01	X02	...	A09	...
PT(ES)	X10	X11	X12	...	A19	...
ST(CS)	X20	X21	X22	...	A29	...
XB(MP)	A00	A01	A02	...	A09	...

(3) Box label

Label Size: 110 mm (L) × 56 mm (W)

Contents

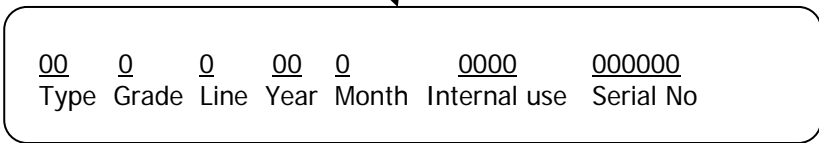
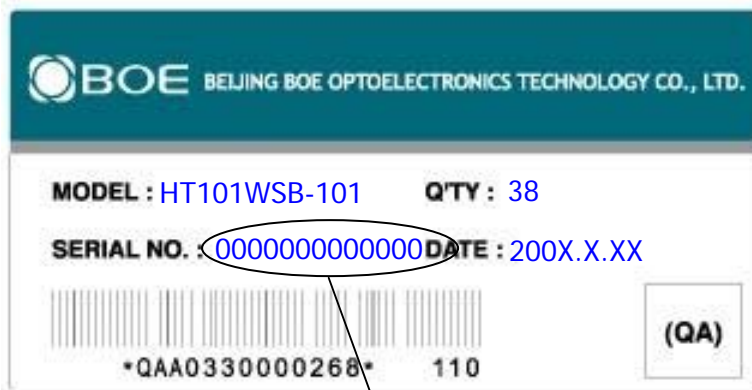
Model: HT101WSB-101

Q`ty: Module Q`ty in one box

Serial No.: Box Serial No. See next figure for detail description.

Date: Packing Date

Internal use of Product



SPEC. NUMBER

SPEC TITLE

HT101WSB-101 Product Specification

27 PAGE

OF 34

B2006-9006-0 (3/3)

A4(210 X 297)



京东方
BOE

PRODUCT GROUP

TFT LCD PRODUCT

REV

0

ISSUE DATE

2009.08.05

15.0 PACKING INFORMATION

15.1 Packing Order

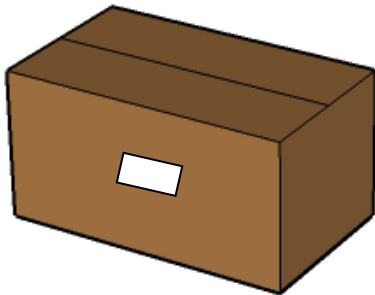
Put the paper pad in the box



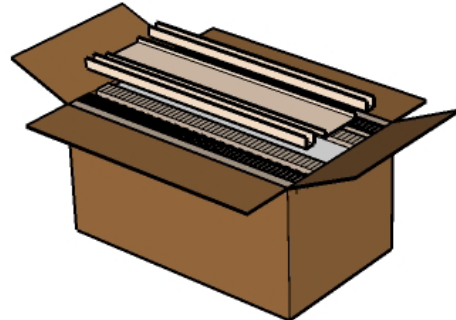
After the box filled with the modules, Put the EPE on the top of modules



After sealing the box, attach packing label on the attach position sign area of the box



Put the paper cover on the top of EPE



15.2 Notes

- Box Dimension: 282mm(W) × 482mm(L) × 249mm(H)
- Package Quantity in one Box: 38 pcs
- Total Weight: 9.1kg

SPEC. NUMBER

SPEC TITLE

HT101WSB-101 Product Specification

PAGE
28 OF 34

B2006-9006-0 (3/3)

A4(210 X 297)



PRODUCT GROUP

REV

ISSUE DATE

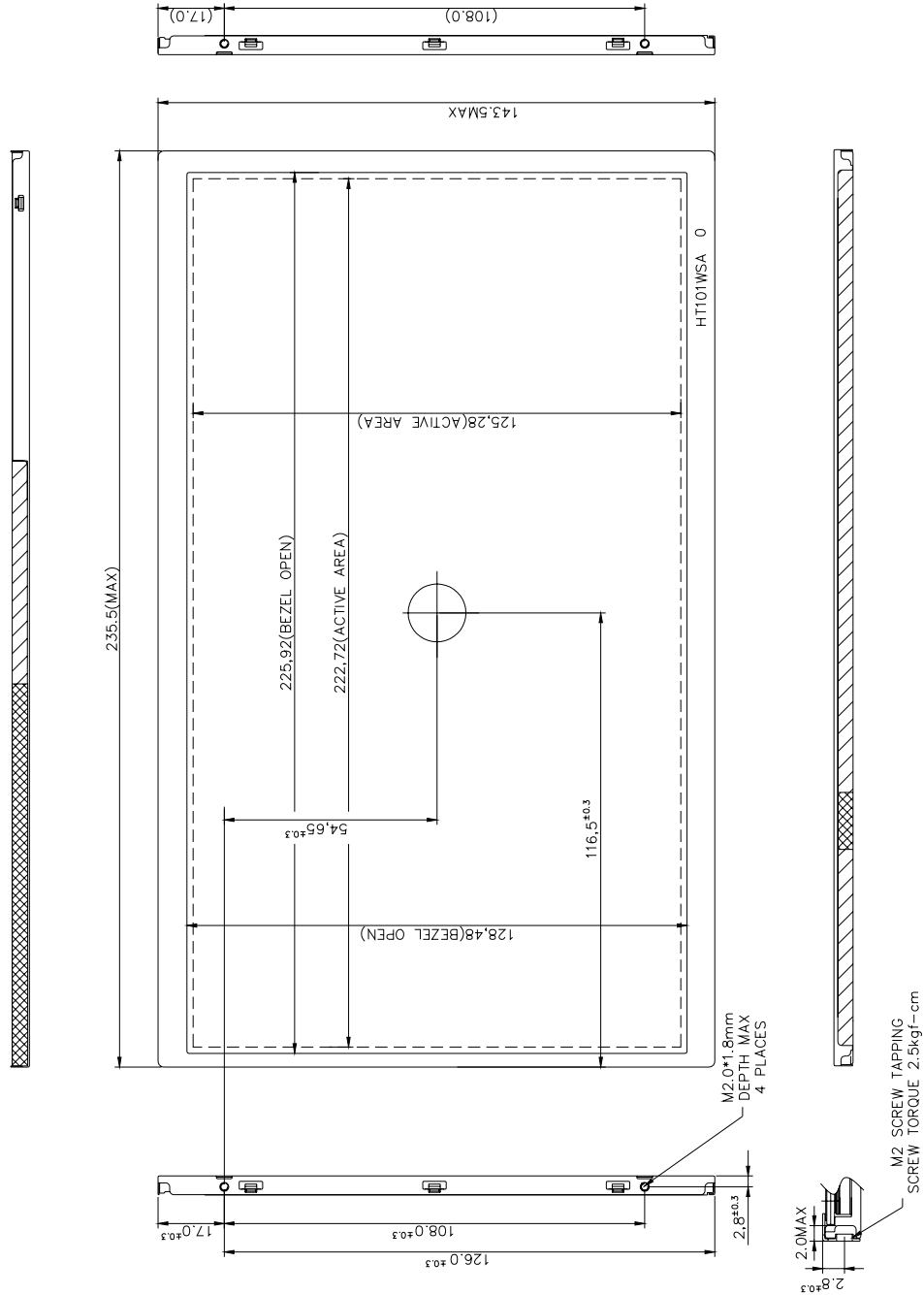
TFT LCD PRODUCT

0

2009.08.05

16.0 MECHANICAL OUTLINE DIMENSION

Figure 5. TFT-LCD Module Outline Dimension (Front View)



SPEC. NUMBER

SPEC TITLE

S864-5051

HT101WSB-101 Product Specification

PAGE
29 OF 34

B2006-9006-0 (3/3)

A4(210 X 297)



京东方
BOE

PRODUCT GROUP

TFT LCD PRODUCT

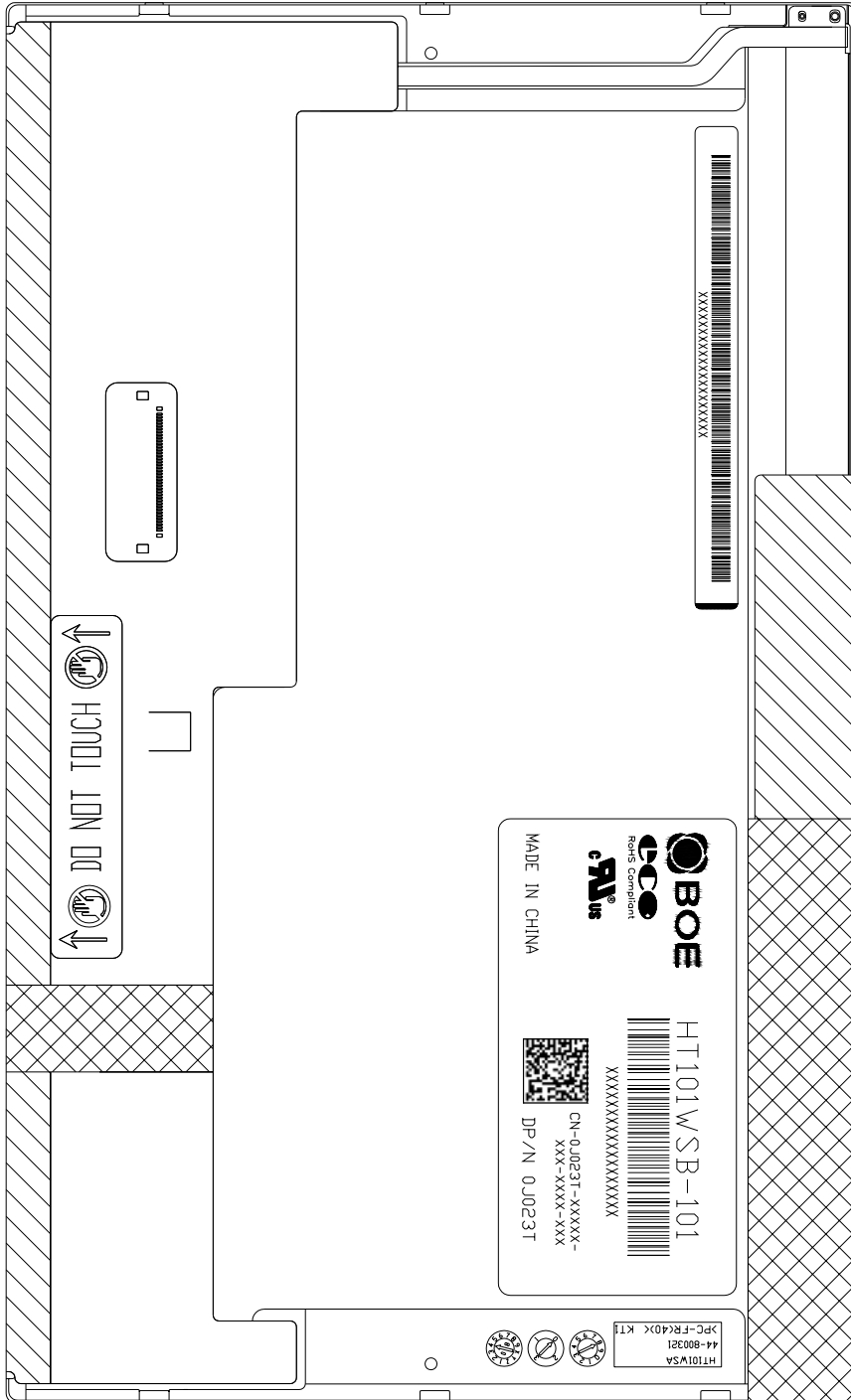
REV

0

ISSUE DATE

2009.08.05

Figure 6. TFT-LCD Module Outline Dimensions (Rear view)



中小液晶专营 深显国际有限公司
www.sdf-china.com
客服QQ:851617122

SPEC. NUMBER

SPEC TITLE

HT101WSB-101 Product Specification

PAGE
OF 34

B2006-9006-0 (3/3)

A4(210 X 297)



京东方
BOE

PRODUCT GROUP

REV

ISSUE DATE

TFT LCD PRODUCT

0

2009.08.05

17.0 EDID Table

Address (HEX)	Function	Hex	Dec	crc	Input values	Notes
00	Header	00	0		0	EDID Header
01		FF	255		255	
02		FF	255		255	
03		FF	255		255	
04		FF	255		255	
05		FF	255		255	
06		FF	255		255	
07		00	0		0	
08	ID Manufacturer Name	09	9		BOE	ID = BOE
09		E5	229			
0A	ID Product Code	87	135		1415	ID = 1415
0B		05	5			
0C	32-bit serial No.	00	0			
0D		00	0			
0E		00	0			
0F		00	0			
10	Week of manufacture	1	1		1	
11	Year of Manufacture	13	19		2009	Manufactured in 2009
12	EDID Structure Ver.	01	1		1	EDID Ver 1.0
13	EDID revision #	03	3		3	EDID Rev. 0.3
14	Video input definition	90	144		-	
15	Max H image size	16	22		22	22 cm (Approx)
16	Max V image size	0D	13		13	13 cm (Approx)
17	Display Gamma	78	120		2.2	Gamma curve = 2.2
18	Feature support	0A	10			RGB display, Preferred Timming mode
19	Red/Green low bits	22	34		-	Red / Green Low Bits
1A	Blue/White low bits	C0	192		-	Blue / White Low Bits
1B	Red x high bits	95	149	596	0.583	Red (x) = 10010101 (0.583)
1C	Red y high bits	56	86	346	0.338	Red (y) = 01010110 (0.338)
1D	Green x high bits	4E	78	312	0.305	Green (x) = 01001110 (0.305)
1E	Green y high bits	8E	142	570	0.557	Green (y) = 10001110 (0.557)
1F	Blue x high bits	26	38	151	0.148	Blue (x) = 00100110 (0.148)
20	Blue y high bits	24	36	144	0.141	Blue (y) = 00100100 (0.141)
21	White x high bits	50	80	320	0.313	White (x) = 01010000 (0.313)
22	White y high bits	54	84	336	0.329	White (y) = 01010100 (0.329)
23	Established timing 1	00	0		-	
24	Established timing 2	00	0		-	
25	Established timing 3	00	0		-	
26	Standard timing #1	01	1			Not Used
27		01	1			

SPEC. NUMBER

SPEC TITLE

HT101WSB-101 Product Specification

31 PAGE

OF 34

B2006-9066-0 (3/3)

A4(210 X 297)



京东方
BOE

PRODUCT GROUP

REV

ISSUE DATE

TFT LCD PRODUCT

0

2009.08.05

28	Standard timing #2	01	1			Not Used
29		01	1			
2A	Standard timing #3	01	1			Not Used
2B		01	1			
2C	Standard timing #4	01	1			Not Used
2D		01	1			
2E	Standard timing #5	01	1			Not Used
2F		01	1			
30	Standard timing #6	01	1			Not Used
31		01	1			
32	Standard timing #7	01	1			Not Used
33		01	1			
34	Standard timing #8	01	1			Not Used
35		01	1			
36	Detailed timing/monitor descriptor #1	8A	138		57.70	57.7MHz Main clock
37		16	22			
38		00	0		1024	Hor Active = 1024
39		DA	218		474	Hor Blanking = 474
3A		41	65		-	4 bits of Hor. Active + 4 bits of Hor. Blanking
3B		58	88		600	Ver Active = 600
3C		2A	42		42	Ver Blanking = 42
3D		20	32		-	4 bits of Ver. Active + 4 bits of Ver. Blanking
3E		30	48		48	Hor Sync Offset = 48
3F		20	32		32	H Sync Pulse Width = 32
40		3A	58		3	V sync Offset = 3 line
41		00	0		10	V Sync Pulse width : 10 line
42		DF	223		223	Horizontal Image Size = 223 mm (Low 8 bits)
43		7D	125		125	Vertical Image Size = 125 mm (Low 8 bits)
44		00	0		-	4 bits of Hor Image Size + 4 bits of Ver Image Size
45		00	0		0	Hor Border (pixels)
46		00	0		0	Vertical Border (Lines)
47		1A	26			Refer to right table
48		8A	138		57.70	57.7MHz Main clock
49		16	22			
4A	00	0		1024	Hor Active = 1024	
4B	DA	218		474	Hor Blanking = 474	
4C	41	65		-	4 bits of Hor. Active + 4 bits of Hor. Blanking	
4D	58	88		600	Ver Active = 600	

SPEC. NUMBER

SPEC TITLE

HT101WSB-101 Product Specification

PAGE

OF 34

A4(210 X 297)

B2009-9006-0 (3/3)

864-5051



京东方
BOE

PRODUCT GROUP

REV

ISSUE DATE

TFT LCD PRODUCT

0

2009.08.05

4E	Detailed timing/monitor descriptor #2	2A	42		42	Ver Blanking = 42
4F		20	32		-	4 bits of Ver. Active + 4 bits of Ver. Blanking
50		30	48		48	Hor Sync Offset = 48
51		20	32		32	H Sync Pulse Width = 32
52		3A	58		3	V sync Offset = 3 line
53		00	0		10	V Sync Pulse width : 10 line
54		DF	223		223	Horizontal Image Size = 223 mm (Low 8 bits)
55		7D	125		125	Vertical Image Size = 125 mm (Low 8 bits)
56		00	0		-	4 bits of Hor Image Size + 4 bits of Ver Image Size
57		00	0		0	Hor Border (pixels)
58		00	0		0	Vertical Border (Lines)
59		1A	26			Refer to right table
5A		Detailed timing/monitor descriptor #3	00	0		
5B	00		0			
5C	00		0			
5D	FE		254			
5E	00		0			
5F	48		72		H	Dell P/N : H018T
60	30		48		0	
61	31		49		1	
62	38		56		8	
63	54		84		T	
64	80		128			EDID Revision : A00
65	48		72		H	BOE P/N :HT10101
66	54		84		T	
67	31	49		1		
68	30	48		0		
69	31	49		1		
6A	30	48		0	Product Name Tag (ASCII)	
6B	31	49		1		
6C	00	0				
6D	00	0				
6E	00	0				
6F	00	0				
70	00	0				
71	00	0				
72	00	0				
73	00	0			Detailed timing/monitor descriptor #4	
74	00	0				
75	00	0				
76	00	0				

SPEC. NUMBER

SPEC TITLE

HT101WSB-101 Product Specification

PAGE

33 OF 34

B2006-9006-0 (3/3)

A4(210 X 297)



京东方
BOE

PRODUCT GROUP

REV

ISSUE DATE

TFT LCD PRODUCT

0

2009.08.05

77		00	0			
78		00	0			
79		01	1			
7A		01	1			
7B		0A	10			
7C		20	32			
7D		0A	32			
7E	Extension flag	00	0			
7F	Checksum	50	50	80	-	

SPEC. NUMBER

SPEC TITLE

HT101WSB-101 Product Specification

34 PAGE
OF 34

B2006-9006-0 (3/3)
S864-5051

A4(210 X 297)